



PHOBOS BT L



Recommended control panel
LIBRA MA R

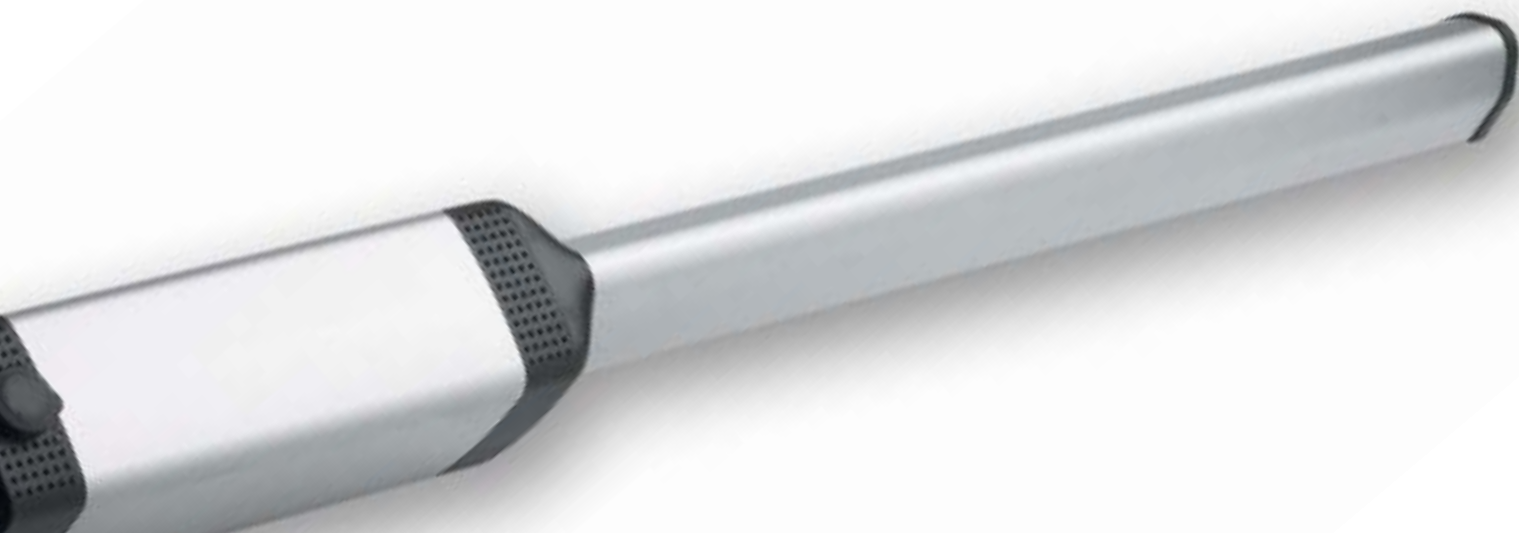
Only available as a kit:
PHOBOS BT L KIT

- **The low voltage safety** and the new design of PHOBOS BT L make of it the ideal irreversible gearmotor for residential swing gates.
- **Electromechanical limit switches** adjust the door opening and closing movements.
- **Maximum anti-squash safety** guaranteed by a special electronic device, adjustable for each motor, and inverts the direction in case of obstacles in opening and closing.
- **Operation in case of power supply** failure is guaranteed by a battery back up unit (BT BAT) which can be supplied on request.
- **Slowdown** may be set at 3 different speeds during both opening and closing (from the control panel).
- Adjustable fixing bracket - Model SFR L (optional).

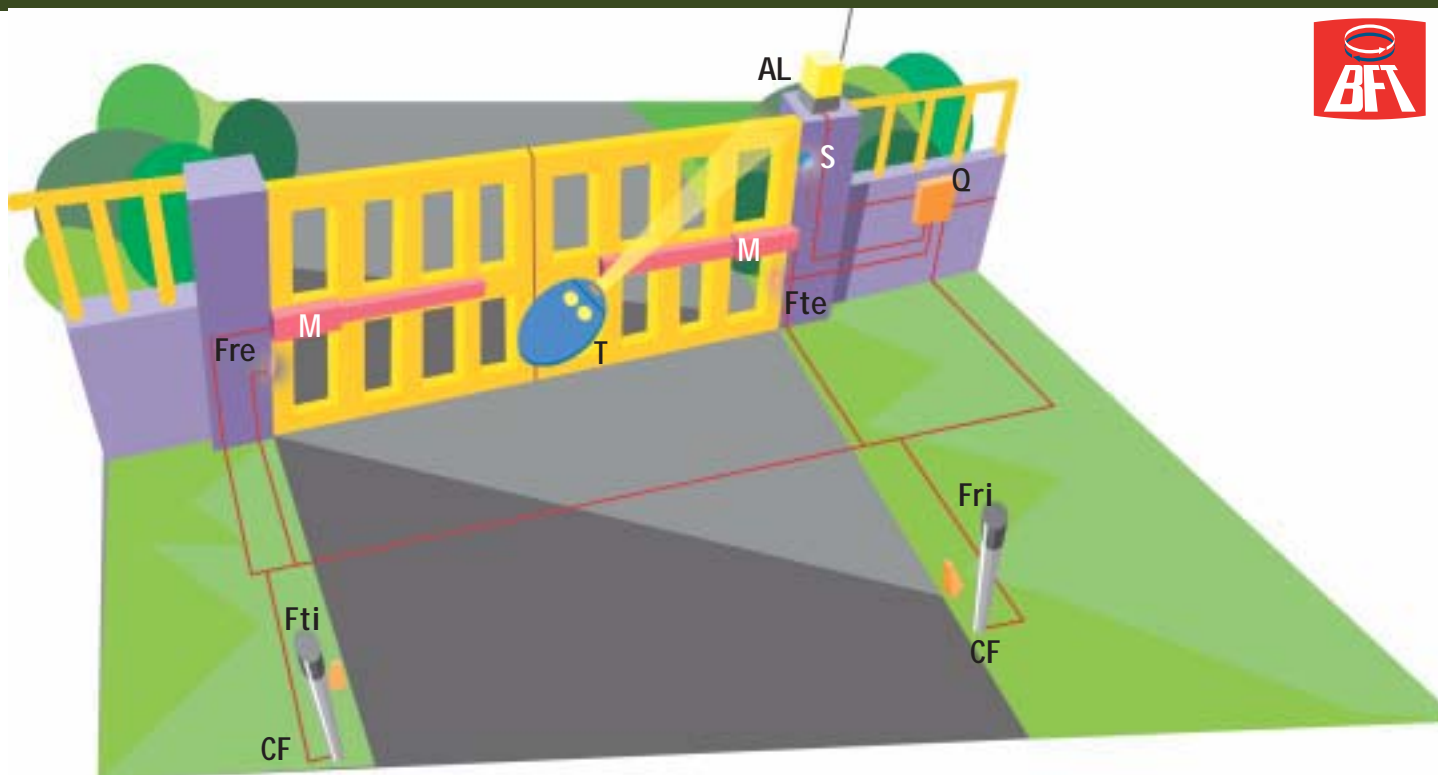


Operator	PHOBOS BT L
Power supply	24 Vdc
Absorbed power	40 W
Max. leaf weight	2500 N (~250 Kg)
Max. leaf length	5 m (with electric lock), 3 m (without electric lock)*
Rod working stroke	410 mm
Rod speed	15 mm/sec
Impact reaction	torque limiter on control panel
Manual manoeuvre	Release key CLS
No. manoeuvres in 24 hours	60
Environmental conditions	from -10°C to + 50°C
Degree of protection	IPX4
Operator weight	65N (~6,5 kg)
Dimensions	see figure

*If you wish to install the 24 VAC-powered automatic gate lock, the ME BT optional accessory must be installed.



Electromechanical operator for swing gates, leaf length up to 5 m, leaf weight up to 250 kg, residential use



Example of installation

Dimensions

M irreversible electromechanical operator, PHOBOS BT L

Q control board, LIBRA MA R with built-in rolling code receiver

T double-channel rolling code transmitter MITTO 2 12V

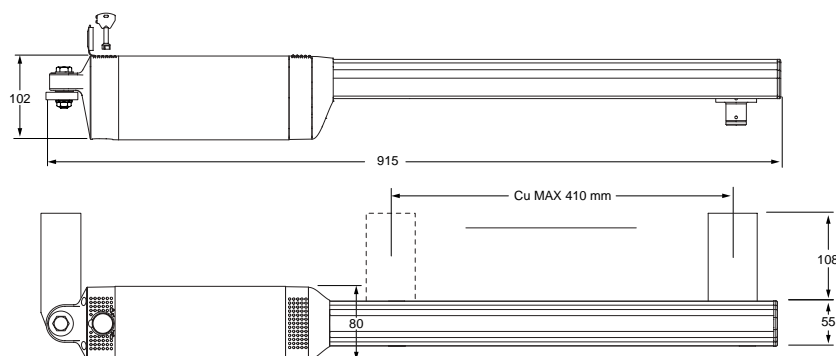
Ftx-Frx pair of photocells, Cellula130

CF pair of posts CC130

AL blinker 24V, with antenna

S key selector, INTRO

• For system layout and installation conditions, refer to the standards and laws in force in the country of installation.



Main characteristics

Irreversible type electromechanical operator for the automation of swing leaf gates for residential use • electric torque limiter on the control panel • key release • limit devices on opening and closing • back up battery kit (optional) • recommended control panel: LIBRA MA R model • Main specifications: motor supply 24Vdc • power 40W • rod speed 15mm/sec • rod stroke 410mm • maximum torque 2000N • max leaf weight 2500N • max leaf length 5000 mm (with electric lock) • Slowdown may be set at 3 different speeds during both opening and closing (from the control panel)