

ICARO MA

ICARO MA P925180 00006



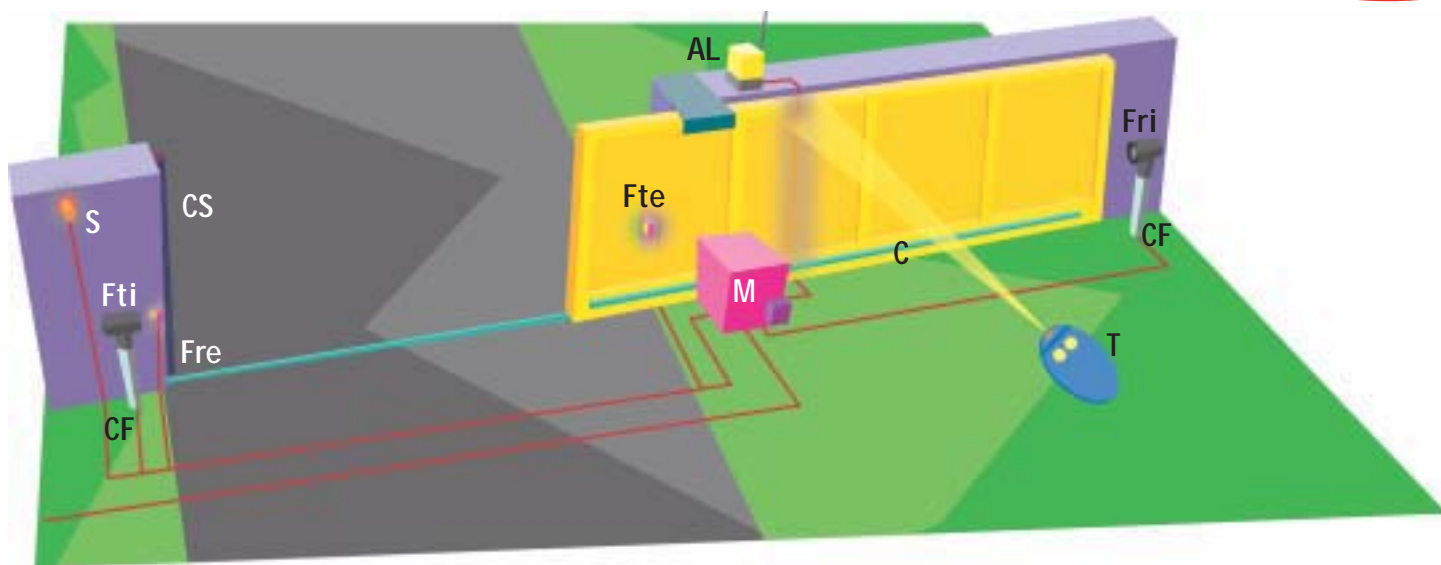
Incorporated control board: LEO MA

- **Maximum performance** and continuous service offered by Icaro MA irreversible gearmotor.
- **Design and convenience:** major aesthetic innovation and greater casing sturdiness.
- **Safe release manoeuvre made simple** by means of the new ergonomic knob.
- **Maximum safety with anti-squash protection**, thanks to a microprocessor which guarantees innovative torque control and inverts the direction in case of obstacles in opening and closing.
- **Improved accessibility and management of the control panel**, having the control board fitted to the front and a display for programming.
- **Diagnostic and statistical functions** through the display.
- **Control board** preset for management by means of the UNIPRO universal programmer.
- **Built in 64 codes rolling code** receiver.
- **Parameter autose**t option for braking, torque and anti-squash functions.
- **Version with inductive limit switch** available.
- **Available in the inductive limit switch version** (by using the FCM KIT)



Operator	ICARO MA
Power supply	230 V \pm 10%, 50 Hz single-phase
Absorbed power	750 W
Thermal protection	integrated
Max. leaf weight	20000 N (~2000 kg)
Output revolutions	37 min ⁻¹
Pinion pitch	4 mm (18 teeth)
Leaf speed	9 m/min
Impact reaction	electronic clutch with encoder
Manual manoeuvre	mechanical knob release with personalised key
N° manoeuvres in 24 hours	continuous service
Control panel	LEO MA
Type of limit switch	electromechanical or inductive
Environmental conditions	from -15°C to +60°C
Degree of protection	IP24
Operator weight	250 N (~25 kg)
Dimensions	see drawing

Automation for rack sliding gates weighing up to 2000 kg, apartment-block and industrial use

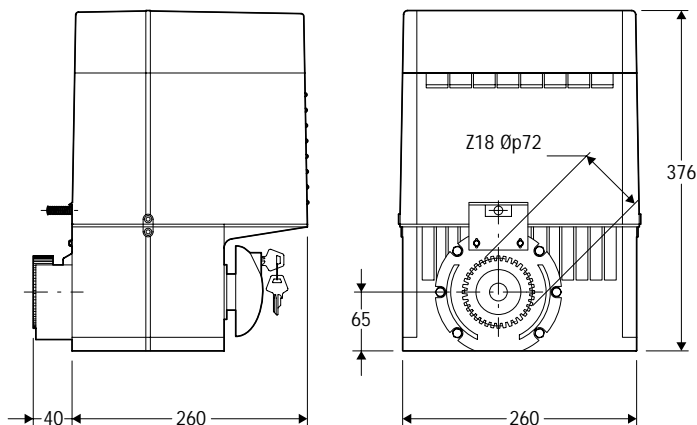


Example of installation

M gearmotor ICARO MA with built-in control board LEO MA and incorporated 64 rolling code receiver
T double-channel rolling code transmitter, Mitto 2 12V
Fte-Fre Pair of photocells, Cellula 130
Fti-Fri Pair of photocells Cellula 50
CF Pair of photocell posts, CC50
AL blinker with antenna
S key selector, Intro
C galvanised iron rack, CFZ
CS safety edge

• For system layout and installation conditions, refer to the standards and laws in force in the country of installation.

Dimensions



Main characteristics

Irreversible type electromechanical operator for the automation of sliding gates for apartment-block and industrial use • ICARO MA is provided with a self-calibration system • electronic torque limiter antisquash function with encoder • setting with display • integrated rolling-code receiver • self-diagnosis function and centralised command option • LEO control board • Main specifications: supply 230 V \pm 10% 50Hz • power 750W • leaf speed 9m/min • max leaf weight 20000N (~2000 kg).

